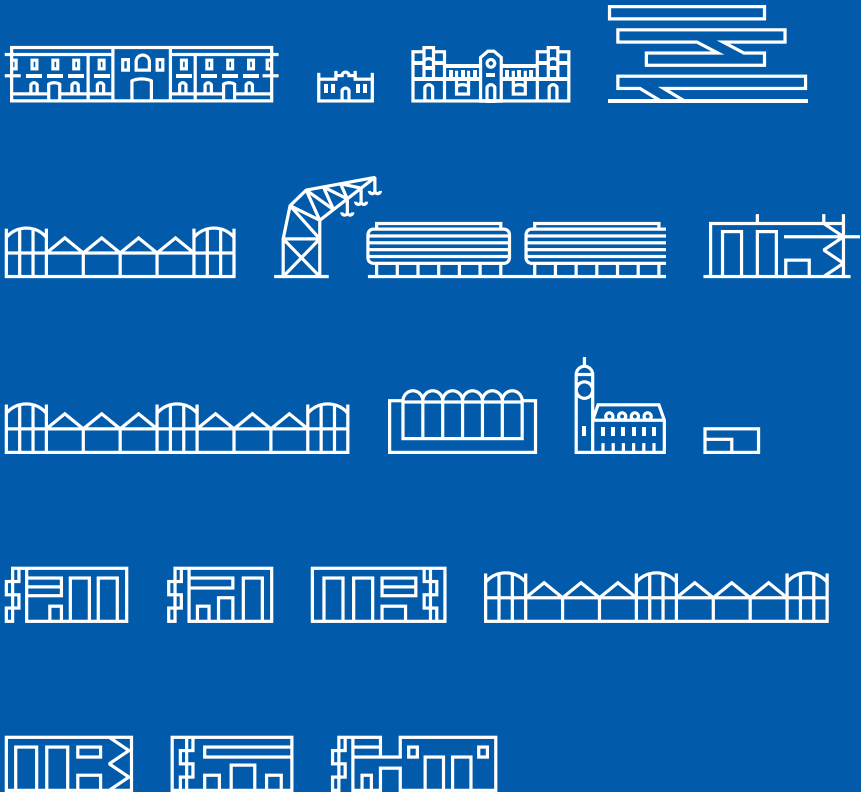




La Marina de València

Venues and spaces



Consorti València 2007 is the institution that manages La Marina. It is an example of consensus and public alliance between the Government of Spain, the Regional Government of València and València City Council. It is an innovative district operating in key sectors such as the nautical (sport and industrial), entrepreneurship, education and economic activation of the public space. A prime example of public-private partnership, the organization promotes innovation and technology through projects with efficient and responsible administration, at the service of the people and local economy. La Marina de València is formed by thousands of people who, day by day, draw it as a living, participatory and sustainable marina.

The dock is also a leading space to host all kind of events, conferences, conventions, product presentations and launches, music events and others initiatives, involving the public and private sectors. It has a variety of spaces and a wide portfolio of services, in a privileged setting—by the sea, it also makes for added value to our users and customers. Our premises and facilities enable us to offer a wide variety of services and business opportunities. The variety of areas, the variable choice of facilities and the capacity to welcome thousands of visitors make it possible to organize tailored events in a modern competitive framework. In addition to this, the city enjoy a pleasant weather and a remarkable cultural life.

Worth mentioning is the Veles e Vents building, designed by the architects David Chipperfield and Fermín Vázquez, a privileged viewpoint of great luminosity and panoramic views, which joins the canal and the inner dock. The complex has achieved the LEAF Award of architecture. It is a multi-space area of 11000 m2 hosting from small-scale events to international major events.

La Marina de València is establishing itself as key reference in innovation and a meeting point between scientific knowledge and business opportunities, with professionalism, versatility and user oriented strategies. The location of the public dock, in the middle of the Mediterranean, and the range of services offered, makes it one of the best places to organize sport, cultural, music and leisure events.

It houses the headquarters of one of the most important business

centres in the city, Marina de Empresas, a brand born to agglutinate the business school EDEM, Lanzadera and Angels. Three different environments creating conditions for nurturing talent. Bankia Fintech, a financial innovative services initiative has now joined this business incubator.

La Marina de València provides organizational knowledge, competitive power, and a highly professional team working to bring success to companies and businesses operating in the Valencian Marina. In order to quickly and effectively respond to the necessities of any event, our professionals provide immediate and flexible solutions. The Marina currently has 18 restaurants with a wide gastronomic offer, it also provides a broad range of marine services – with a total of 820 berths from 7 to 150 meters long, and a varied network of business partners (leisure companies, corporate events companies, service providers, industrial companies, federations, clubs and schools).

It is situated just a few minutes from Valencia city centre and very well connected to the main routes. Valencia's international airport in Manises is just 18 km away, which makes it possible to reach the city from almost any part of the world. Furthermore, from La Marina de Valencia you can access all sorts of services (taxi, bus, train, rent a car) connecting our premises to any point in the city.

La Marina de Valencia carries out its activities within sustainable and environmentally friendly parameters. Additionally, it plays an important role as a driver of the local economy through the promotion of Valencia both at the national and international level.

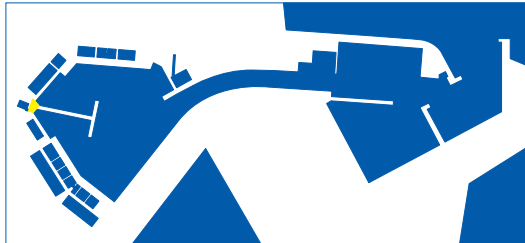
Venues and spaces

The Clock Building forecourt/Plaça de les Hores

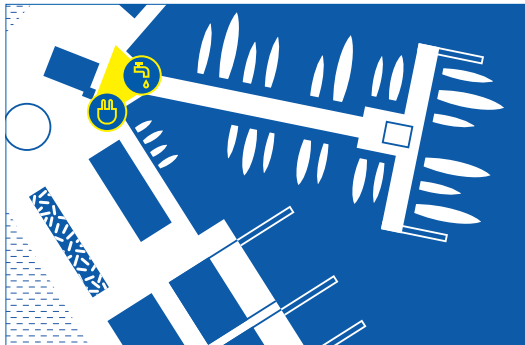
Features:

This is a forecourt located between the Clock Building and the inner dock. It is one of the closest spots to the city.

- 1,350m² - 30m long x 75m wide
- Public toilets in Tinglado 2 –only available for events. Cleaning and maintenance during the event will be responsibility of the promoter. Depending on the event, promoters will have to consider placing extra portable toilets
- Utilities:
 - Water supply (please, check availability)
 - Electricity (please, check availability)
- Access to the central jetty and the evacuation route parallel to the ledge must be kept clear
- For technical reasons, vehicles must access the facilities through the road between the Clock building and the Tourist Office. Access restricted with automated barrier



<https://goo.gl/maps/hFnV5oyb91u>



Electricity



Water supply

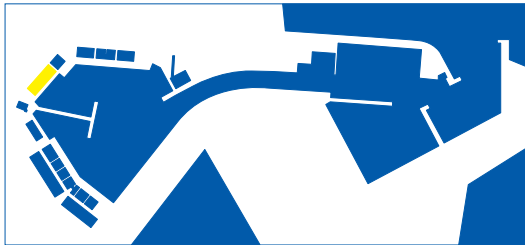


Tinglado 2

Features:

Tinglado 2 is an old harbour shed declared a Local Cultural Interest. Located in the inner dock of the Marina de València, it has a roofed open space and two rigid hubs. The space available to rent is the part beneath the ceiling. This is an open space with four rows of columns running lengthwise on a grid of 13.5 × 5 m.

1. 4,200m² (105m long x 40m wide maximum)
2. Toilets available only for events. Cleaning and maintenance during the event will be responsibility of the promoter. Depending on the event, promoters will have to consider placing extra portable toilets.
3. Utilities:
 - Water supply: one in pit and another to be installed
 - Electricity: 2 × 40kw
4. For technical reasons, vehicles must access the facilities through the bollard area that separates the forecourt from the road. Access restricted with automated barrier.



<https://goo.gl/maps/3uShX7cdQo92>



-  Electricity
-  Water supply
-  Public toilets

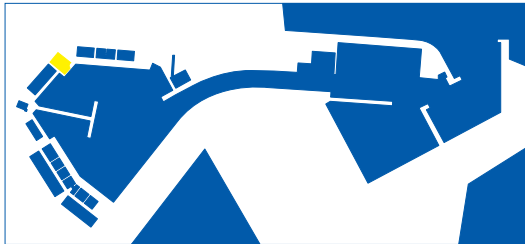


Forecourt next to Cabria crane/Plaça de l'Aigua

Features:

This is a large forecourt located between Cabria crane and Tinglado 2 facing the inner dock of the Marina. It is the closest open space to the main entrance. As it is located next to Tinglado 2, both spaces together may be used for major events with great extension needs, providing indoor and outdoor facilities.

1. 4176 m² (72 m long x 58 m wide)
2. No public toilets nearby. Promoters shall install portable toilets
3. Parking area in the surroundings
4. Utilities:
 - Water supply
 - Electricity: 40 Kw
5. For technical reasons, vehicles must access the facilities through the bollard area between Cabria crane and Tinglado 2



<https://goo.gl/maps/nb58gMkwC132>



-  Electricity
-  Water supply
-  Car park

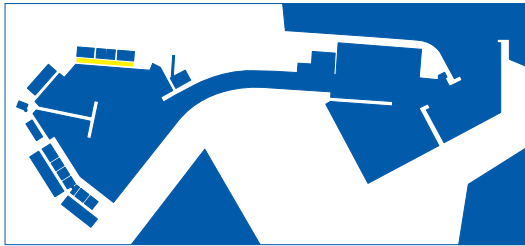


Forecourt opposite Edem and Lanzadera

Features:

This is a large forecourt located opposite Edem and Lanzadera. It is part of the former Formula One circuit that runs along the inner dock of the Marina.

1. 3,100 m² (240 m long x 13 m wide)
2. No public toilets nearby. Promoters shall install portable toilets
3. Utilities:
 - Water supply (please, check availability)
 - Electricity (please, check availability)
4. This venue is located next to a school of business and an office building; therefore events shall not interfere in their daily activity
5. For technical reasons, vehicles must access the facilities through the bollard area between Cabria crane and Tinglado 2



<https://goo.gl/maps/PCZ1HxY6AbQ2>



Electricity



Water supply

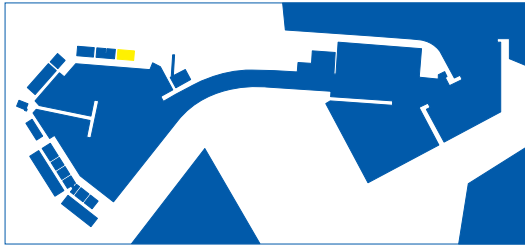


Alinghi team base

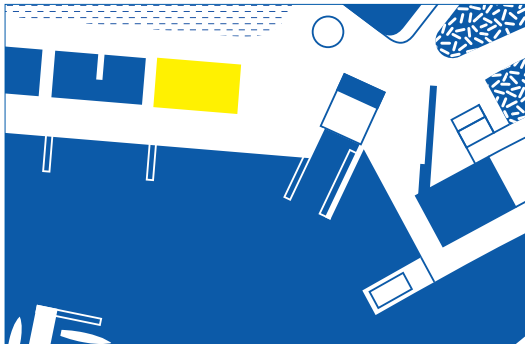
Features :

This building was Alinghi team base during America's Cup. It is located in the inner dock, near the emblematic building Veles e Vents. Its main façade, sea facing, provides added value to carry on all sort of activities. Only the ground floor is currently available for events. Indoor areas available are:

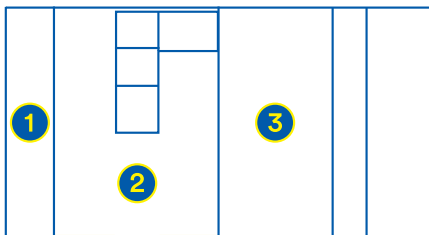
1. Hangar 1. 1160 m2 distributed in an open space of 970 m, several storage rooms and toilets
2. Hangar adjacent area. Around 1238 m2, to be used as an extra or additional area to the open space in Hangar 1
3. Hangar 2. Around 625 m2. To be used as an extra or additional area to the open space in Hangar 1



<https://goo.gl/maps/h6nqqeDk18L2>



-  Electricity
-  Water supply
-  Public toilets



Floor plan

-  1 Hangar adjacent area 1
-  2 Hangar 1
-  3 Hangar 2

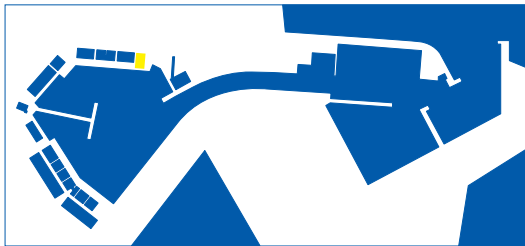


The forecourt next to Alinghi team base/Plaça de l'Ona

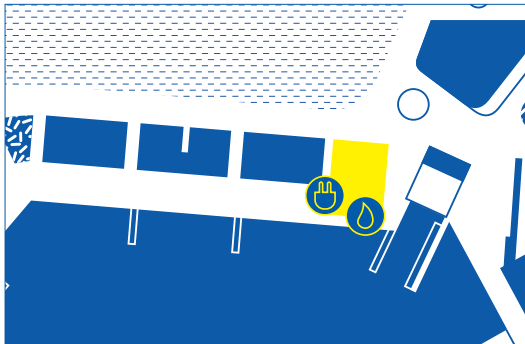
Features:



This is a large forecourt located between Alinghi team base during America's Cup and the former shipyard. This forecourt is part of the Formula One track and it is located in the inner dock, near the emblematic building Veles e Vents.

1. 3,150 m² (75m long x 42m wide)
2. No public toilets nearby. The promoter shall install portable toilets
3. Parking area: 800 spaces in the Veles e Vents complex
4. Utilities:
 - Water supply (please, check availability)
 - Electricity (please, check availability)
5. For technical reasons, vehicles must access the facilities through the bollard area between Cabria crane and Tinglado 2



<https://goo.gl/maps/Gh33DDRCDN2>



-  Electricity
-  Water supply

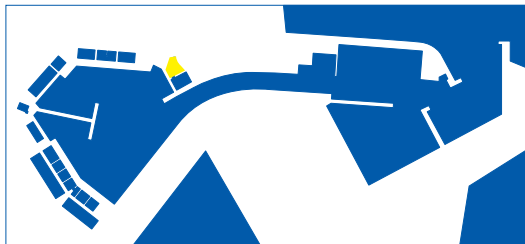


The forecourt in front of the Veles e Vents building

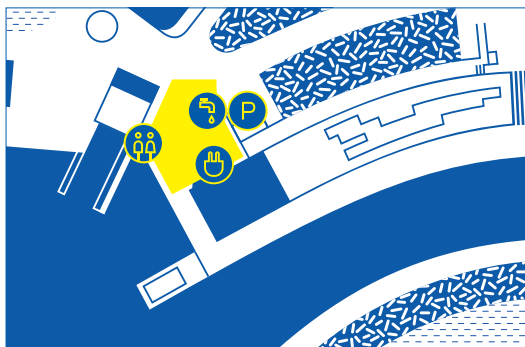
Features:


This is a forecourt located right in front of the Veles e Vents building. The use of this space must be compatible with the regular activity of the complex and the businesses operating nearby (boat trips and terrace on the wharf). The event must not block the access to the ramp or the stairs to the first floor.

1. Approximately 3,800m² (polygonal space with an area of 90m long x 75m wide maximum)
2. Public toilets in the forecourt. Depending on the event, the promoter will have to consider placing extra portable toilets
3. Car park: 800 spaces in the Veles e Vents complex
4. Utilities:
 - Water supply
 - Electricity: 130Kw and 50Kw
5. Waste management facility
6. Access to the ramp and the stairs that lead to the public floor of the building must be clear, as well as the entrance to the building itself
7. For technical reasons, vehicles must access the facilities through the bollard area that separates the forecourt from the road



<https://goo.gl/maps/SiA4yqDtau22>



-  Electricity
-  Water supply
-  Public toilets
-  Car park

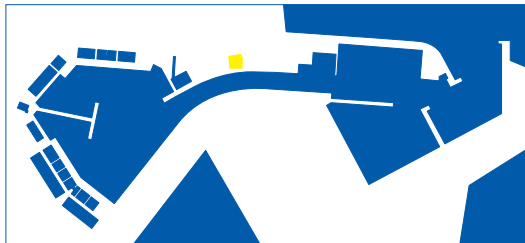


North Marina grandstand forecourt/ Plaça de la Sal

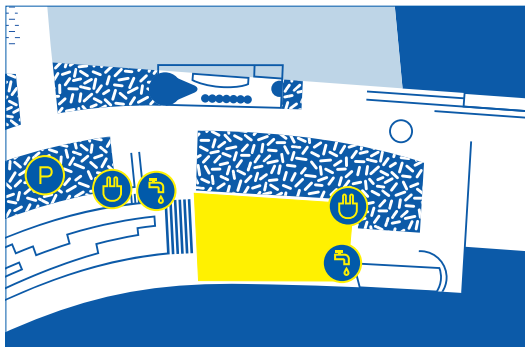
Features:


This open space is located next to the playground and the restaurant area. It is the closest space to the beach, well established and with the biggest amount of people passing through. It is surrounded by a garden area and connected to the Veles e Vents building and the restaurant area by a wooden grandstand.

1. Approximately 3.965m² (65 m long x 61 m wide approximately)
2. Public toilets nearby. Depending on the event, the promoter will have to consider placing extra portable toilets
3. Parking area nearby
4. Utilities:
 - Water supply
 - Electricity: 20Kw and 50Kw
5. Waste management: a specific area will be designated to place the rubbish bins hired by the organization
6. The evacuation route of the Veles e Vents building must be kept clear
7. For technical reasons, vehicles must access the facilities through the pedestrian zone that passes through the children's play area



<https://goo.gl/maps/5GBV4Gm9ydc>



-  Electricity
-  Water supply
-  Car park

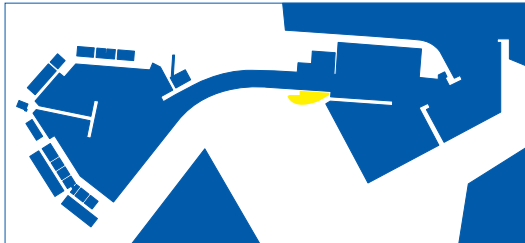


South grandstand forecourt/ Plaça de l'horitzó

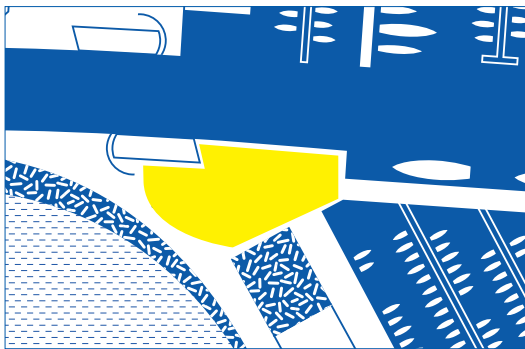
Features:

It consists of a 5.6 metres high 11-step grandstand, which leads to a garden area and overlooks an open-air square. It faces North, more specifically La Malvarrosa beach and the North Marina.

1. Around 7300m² (polygonal space with an area of 160m long x 66 m wide maximum)
2. No toilettes nearby. The promoter shall install portable toilets
3. Parking area nearby
4. Utilities:
 - Water supply (please, check availability)
 - Electricity (please, check availability)
5. Access to the restaurants as well as to the vessels will be guaranteed to our customers. Certain parking spaces are for restaurant customer use
6. Waste management: a specific area will be designated to place the rubbish bins hired by the organization
7. For technical reasons, vehicles must access the facilities through the ramp located by the swing bridge



<https://goo.gl/maps/eU7Aq5eQHsR2>

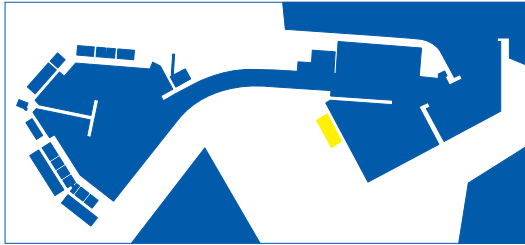


South Marina forecourt

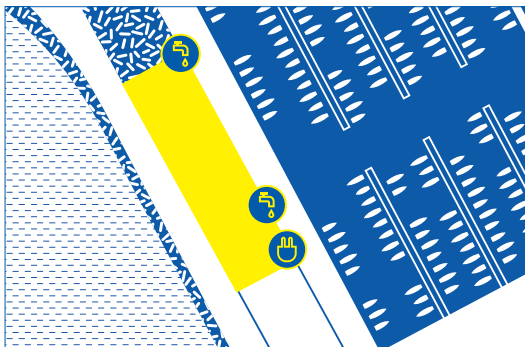
Features:

This is a large, asphalt forecourt in rectangular shape. It is located in the South Marina, adjoining a big berthing area.

1. Approximately 11.060 m² (79m wide x 140m long)
2. No toilets nearby. The promoter will have responsibility for installing portable toilets
3. Car park in the surroundings (125 spaces at the palm tree area)
4. Utilities:
 - Water supply (please, check availability)
 - Electricity (please, check availability)
5. Waste management: a specific area will be designated to place the rubbish bins hired by the organization
6. Access to the restaurants as well as to the vessels will be guaranteed to the customers. Certain parking spaces are for restaurant customer use



<https://goo.gl/maps/2nz34sgJNfp>



Electricity



Water supply





Available spaces for nautical events



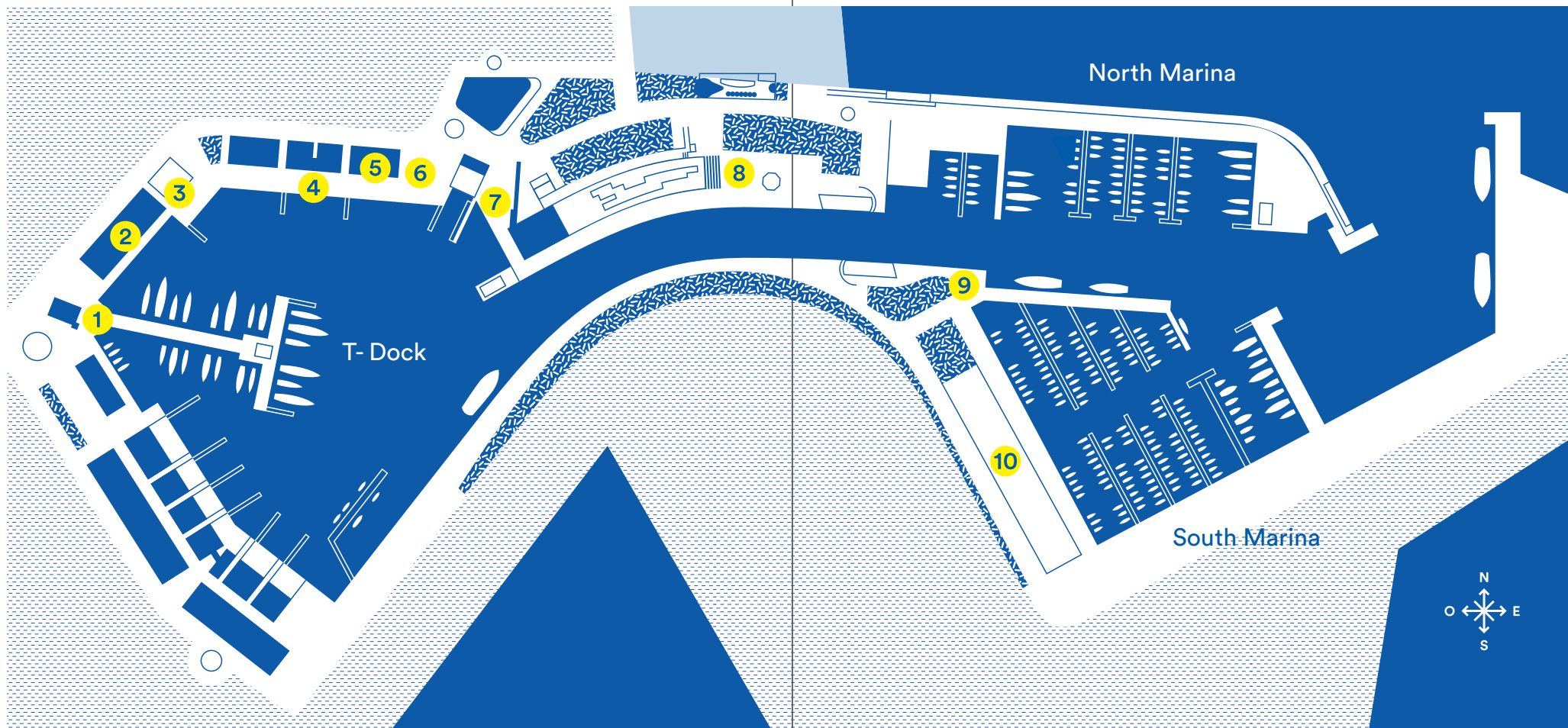


La Marina de València is one of the most outstanding docks in the Mediterranean Sea to host all kinds of nautical events. Purpose-built for international competitions, such as the 32 and 33 America's Cup, it has now become a well-established host of international regattas all year round. Among others, the prestigious RC44, TP52, Trophée Clairefontaine, Route des Princes, Valencia Boat Show, Soto 40 European Championship, Women Match Race Spanish Championship, BMW Sailing Cup, Mini Air Regatta, Melges 40, Fishing Championship and Kayak Fishing Championship. The programme 10Anys, to commemorate the 10-year anniversary of La Marina, included regattas of different types and disciplines: fishing, lateen sailing, SUP, dinghy sailing, RC Sailboat National Race, Sea Rowing Regatta and the gastronomic regatta Cuina a Bord. As a meeting point for water sports lovers, the public dock is currently a place of reference for the excellence of its nautical tourism. Every year, the marina also holds the Valencia Boat Show, as well as open water swimming events and triathlons of significant popular impact.

We offer:

1. A deep water line that can host nautical events even within the harbour
2. Open spaces to make shops and businesses more visible
3. A first-rate race course
4. Logistics solutions for the nautical sector
5. A wide range of leisure facilities





Map

1. The Clock Building forecourt/*Plaça de les Hores*
2. Tinglado 2
3. Forecourt next to Cabria crane/*Plaça de l'Aigua*
4. Forecourt opposite Edem and Lanzadera
5. Alinghi team base
6. Forecourt next to Alinghi team base/*Plaça de l'Ona*
7. The forecourt in front of Veles e Vents building
8. North Marina grandstand forecourt/*Plaça de la Sal*
9. South grandstand forecourt/*Plaça de l'horitzó*
10. South Marina forecourt

La Marina de València

Consortio Valencia 2007
Muelle de la Aduana, s/n
46024. València. Spain

info@marinavalencia.com
www.lamarinadevalencia.com

T: +34 963 462 007

F: +34 963 405 577

[instagram.com/lamarinadevalencia](https://www.instagram.com/lamarinadevalencia)
[facebook.com/lamarinadevalencia/](https://www.facebook.com/lamarinadevalencia/)
twitter.com/lamarinadevlc